



# **YEAR 11 - THE YEAR AHEAD**

# YEAR 11 PASTORAL STRUCTURE



**Mr Chris Collins**

Deputy Head: Pastoral

Designated Safeguarding Lead

Teacher of Maths

[ccollins@cliftonhigh.co.uk](mailto:ccollins@cliftonhigh.co.uk)



**Mr Mike Wallington**

Head of Year 11

Teacher of Physical Education

[mwallington@cliftonhigh.co.uk](mailto:mwallington@cliftonhigh.co.uk)

# YEAR 11 TUTOR TEAM



11.1 - Mr Applebey & Mrs Pieters

11.2 - Mrs Denning and Frau Harris

11.3 - Mr Cloete and Mme Ribot-Bruno

11.4 - Miss Cole and Miss Fisher

# Form time

MONDAY	TUESDAY	WEDNESDAY	THURSDAY	FRIDAY
Review of last week – Merits, Misconduct Marks, Special Mentions	Private Study 1:1 Tutorials if no assembly	ERIC Health and Well-being (Period 1)	Year 10-13 Assembly (Most Thursdays)	Optional Form Time Activity: E.G. News of the Week Kahoot OneNote Activity Cards/ Uno etc.

# ATTENDANCE

Pupils are registered at 8:40am in their tutor rooms and at the start of every lesson periods 1-6.

## Absence

- Please contact your child's Tutor and [absence@cliftonhigh.co.uk](mailto:absence@cliftonhigh.co.uk) if your child will be absent.
- Alternatively, please call 01179730201 by 8:30am on the day of absence.
- You must specify the reason e.g.: Dental Appointment, or the nature of their illness.
- For planned absence please seek written permission from Mr Chris Collins

## Late

- If your child will be arriving late for whatever reason, please notify the School Office and Sign In on arrival.



# ATTENDANCE

Attendance	Days absent	Lessons missed
100%	0 days of absence	0
96%	7 days of absence equates to 1 week and 2 days of learning	42
90%	17 days of absence equates to 3 weeks and 2 days of learning	102
85%	25.5 days of absence equates to 5 weeks and 0.5 days of learning	153
80%	34 days of absence equates to 6 weeks and 4 days of learning	204
75%	42.5 days of absence equates to 8 weeks and 2.5 days of learning	255

# Uniform

- Feeling amongst HOYS and other staff members that standards of uniform had dropped and that there was a lack of consistency across the staff body in terms of application of the policy.
- Standards also raised by a number of parents at Rose Day and Prizegiving ceremonies.
- The new Head had picked up on it when visiting the School in the Summer Term.

# THE SENIOR SCHOOL MAIN UNIFORM





# KEY POINTS TO REINFORCE/ SUPPORT WITH AT HOME

- Boys' shirts – shirts to be tucked in.
- Girls wearing skirts/ kilts – not to be rolled up at all.
- Jewellery – stud earrings only. A necklace with a fine chain and religious symbol can be worn for religious purposes. No other jewellery is to be worn.
- Blazers – to be worn at all times around School.
- Shoes – Black Leather formal shoes...
- Mobile Phones – Never seen, never heard.

# THE SENIOR SCHOOL AND SIXTH FORM SPORTS KIT

## P.E.



## GAMES



# KEY POINTS TO REINFORCE/ SUPPORT WITH AT HOME

- Full tracksuit to be worn at all times around School.
- Clifton High kit only, with the exception of tracksuit bottoms, as long as they are black and the same material.
- Wednesday is the only day pupils should be arriving at School in PE kit. The only exception is for those that have a Tennis lesson or attend S&C on a Monday morning.
- Those that attend Tennis or S&C should change back into uniform at break time.
- The majority of GCSE PE lessons are Theory, so School Uniform should be worn. Mrs Reid and Mrs Gomersall will communicate with pupils and form tutors if/ when they have a practical and need to wear kit.
- Changing for Co-curricular clubs after school is at 4.00pm, not at lunch time.

# REWARDS AND SANCTIONS

- Merit count (not points) - 50 Bronze, 100 Silver, 150 Gold
- Head of Year Half termly Tutor group reward
- Fridays Hot Chocolate rewards – can be awarded for a variety of things including merits
- Heads Rewards Assembly – recognises success both in and out of School (please let Head of Year or Tutors know of your child's achievements outside of school)

Head of Year detention (time to reflect) on reaching 5 Misconduct Marks in any half term period or for one off events

Academic detention (academic catch-up session) if work is poor and homework not completed



**Clifton  
High School**

# THIS YEAR

- Classwork
- Coursework
- Homework
- Mock Exams
- Sixth Form Option Choices
- GCSE Exams
- Sport, Music, Production, Co-Curricular clubs.
- Multiple other things, and that's just in School

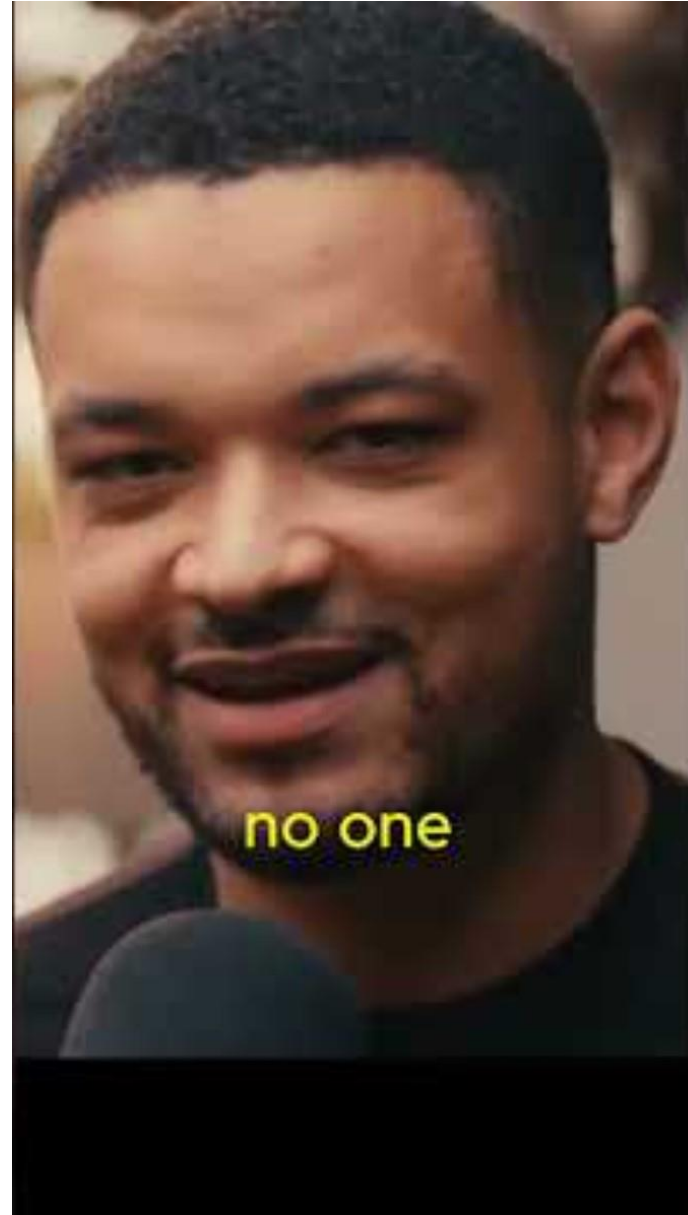


# SOME CONSIDERATIONS TO MAKE

- Attendance
- Punctuality
- Appearance
- Application
- Organisation/ Time Management
- Appropriate preparation for exams
- Extending learning beyond class/ lesson content
- Decision making and having priorities in order

# MARGINAL GAINS

[Sweating the small stuff  
for marginal gains -  
Steven Bartlett  
\(youtube.com\)](#)



**Clifton  
High School**

# **ANOTHER POSSIBLE STARTING POINT: LUNCH TIME ACADEMIC HELP CLUBS**

- Starting on Monday 16<sup>th</sup> September.
- Timetable to be published next week and will be accessible on SOCS.
- Teachers may make it compulsory for some of you to attend.
- You can also sign up to attend.



# PROVISIONAL TIMETABLE

<b><u>Subject</u></b>	<b><u>Day of Session</u></b>	<b><u>Time of Session</u></b>	<b><u>Venue</u></b>	<b><u>Staff</u></b>
Mathematics	Monday	Lunch 2	DG1	CCM, LHO, MIZ
English	Monday	Lunch 2	D21	MBR & LHZ (wk 1); PLY & CAN (wk 2)
History and Politics	Monday	Lunch 2	H11 until half-term; A13 thereafter	TAP
Spanish	Monday	Lunch 2	G11	NWI
Product design	Monday	Lunch 2	KG1	SFR and BWE
Biology	Monday	After School	C12	SDA
Biology	Tuesday	Lunch 2	C12	SDA
Computer Science	Tuesday	Lunch 2	H21	MFI
German	Tuesday	After School	E24	THA
Art and Photography	Tuesday	After School	Art Department	PAY, JFR, ABA
Geography	Wednesday	Lunch 2	EG1	LGI, ASC, HCU
Chemistry	Wednesday	Lunch 2	CB4 and CB6	HDE and MJN
History	Wednesday	Lunch 2	H11 until half-term; A13 thereafter	HDE and MJN
Latin	Thursday	Lunch 2	FG1	EMA
Physics	Thursday	Lunch 2	CB9	PGR
French	Thursday	Lunch 2	E23- club taking place only week 1	ERI
Mathematics	Thursday	Lunch 2	DG1	AHI, NBR
Computer Science	Thursday	Lunch 2	H21	MFI

# GCSE EXAM BOARDS

GCSE	Examination board and specification Summer 2025	
	Subject	Board
Art	OCR	J171
Biology	AQA	8461
Chemistry	AQA	8462
Computing	OCR	J277
Drama	AQA	8261
English Language	Edexcel	4EAI BE (iGCSE 9-1)
English Literature	Edexcel	4ET1 B (iGCSE 9-1)
English as a Second Language	CiE	0510 (GCSE A-E)
Food & Nutrition	AQA	8585
French	AQA	8658
Geography	CiE	0976 BY
German	AQA	8668
History B (Modern World)	CiE	0977AY
Latin	OCR	J282(G)
Mathematics	Edexcel	4MA1F/H
Further Mathematics	AQA	8365
Music	Edexcel	1MU0
PE	AQA	8582
Physics	AQA	8463
Product Design	CiE	0979 AY (RM)
RS	Eduqas	8061D SC
Spanish	AQA	8698

# DATES FOR YOUR DIARY

Date	Event	Timings
Tuesday 10 <sup>th</sup> September	Year 11 – Year Ahead Evening	17.30 – 19.05
Thursday 3 <sup>rd</sup> October	Sixth Form Open Evening	17.00 – 19.30
Monday 14 <sup>th</sup> October Thursday 14 <sup>th</sup> November	Sixth Form Transition Meetings	16.30 - 19.30
Wednesday 27 <sup>th</sup> November	Year 11 Revision Seminar	9.00 – 13.00
W/C 9th December (Specific Date TBC)	Year 11 End of Term Trip	From 13.00
Tuesday 7 <sup>th</sup> – Thursday 16 <sup>th</sup> January	Year 11 Mock Exams	
Wednesday 29 <sup>th</sup> January	Year 11 Parents Evening	16.30 – 19.30

# SUPPORT

- Keep communication open (HOY, Form Tutors, Class Teachers).
- Help them to make correct decisions around key times.
- Use tools to help them manage time: [Get Revising](#)